


Microsoft

# Windows Server 2003 Active Directory Infrastructure

70-294 70-294 70-294 70-294 70-294 70-294 70-294 70-294

STUDY  
PRINTABLES

**PRINTABLE PRACTICE QUESTIONS**  
QUESTIONS, ANSWERS, AND  
DETAILED EXPLANATIONS IN AN  
EASY-TO-USE PRINTABLE FORMAT

 LearnSmart™

## Chapter 1

# Planning and Implementing an Active Directory Infrastructure

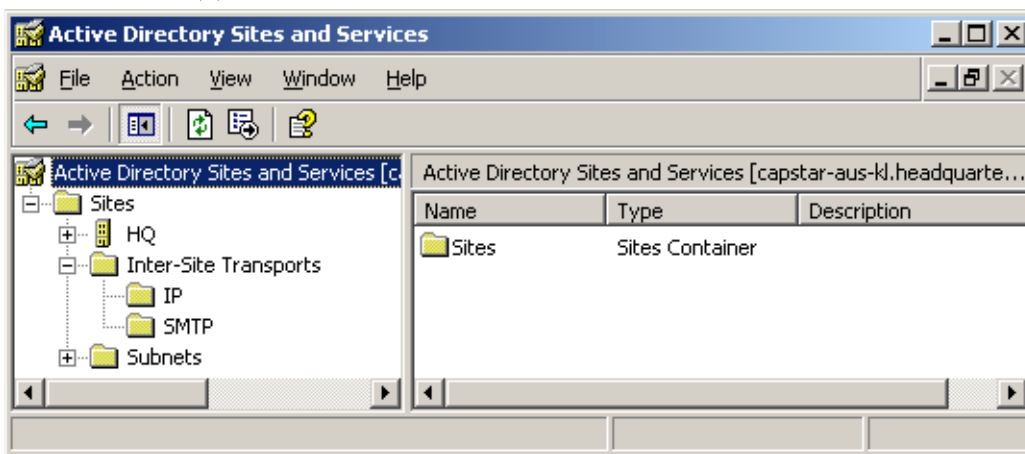
1. Tom has created a customized program that needs to store data on domain controllers so that it will be replicated to several domains in his company's Active Directory forest. What should he do? Select the best answer.
  - A. Add an additional application programming interface (API) that enables the application to store its data in the Active Directory configuration partition.
  - B. Use the ntdsutil tool to create an application partition.
  - C. Use Active Directory Users and Computers to create an application partition.
  - D. Use Active Directory Sites and Services to create an access for the application to store its data in the Active Directory configuration partition.

[Find the Answer](#) p. 177

2. Brian is configuring replication of Active Directory between domain controllers in his company's Active Directory forest, which includes three domains and eight sites located in different West Coast cities. He wants to use Exchange Server to e-mail replication data between San Francisco and Los Angeles. The replication path should proceed through the San Jose site because this site is connected with San Francisco and Los Angeles with T1 links; the San Francisco and Los Angeles sites are connected directly with only a 128-Kpbs ISDN line. View the exhibit. What should Brian do? Select the correct answer.
- A. Use the IP container in the Inter-Site Transports folder of Active Directory Sites and Services to create a new site link.
  - B. Use the SMTP container in the Inter-Site Transports folder of Active Directory Sites and Services to create a new site link.
  - C. Use the IP container in the Inter-Site Transports folder of Active Directory Sites and Services to create a new site link bridge.
  - D. Use the SMTP container in the Inter-Site Transports folder of Active Directory Sites and Services to create a new site link bridge.

[Find the Answer](#) p. 177

Exhibit(s):



3. Rhoda is a domain administrator for her company, which is in the process of setting up its Windows Server 2003 network. The company operates six offices, which she will configure as separate Active Directory sites. She is in the process of evaluating where to place the flexible single-master operations (FSMO) roles. Which of the following should Rhoda consider as the best site for the domain's primary domain controller (PDC) master FSMO role? Select the best answer.
- A. Any site at which a global catalog server is also located.
  - B. The site at which the RID master is located.
  - C. The site that contains the largest number of users.
  - D. The site at which administrators create the most user and group accounts.

[Find the Answer](#) p. 177

4. You are designing an Active Directory infrastructure for a company that is upgrading three Windows NT domains to Windows Server 2003. The company is keeping the three domains intact because managers expect significant corporate growth in the next few years. The company operates a head office in St. Louis and five branch offices in different cities. One branch office located in Santa Fe has only seven employees and a single domain controller, and is connected to other offices with a 64-Kbps ISDN link. Which of the following should you configure on the Santa Fe domain controller? Select the best answer.
- A. Universal group caching
  - B. Global catalog
  - C. Both a global catalog and universal group caching
  - D. Neither a global catalog nor universal group caching

[Find the Answer](#) p. 177



5. You are designing an Active Directory infrastructure for a company that is upgrading three Windows NT domains to Windows Server 2003. The company is consolidating these domains into a single Active Directory domain. The company operates a head office in St. Louis and five branch offices in different cities. One branch office located in Santa Fe has only seven employees and a single domain controller, and is connected to other offices with a 64 Kbps ISDN link. Which of the following should you configure on this domain controller? Select the best answer.
- A. Universal group caching
  - B. A global catalog
  - C. Both a global catalog and universal group caching
  - D. Neither a global catalog nor universal group caching

[Find the Answer](#) p. 177

## Answers: Chapter 1

1. <b>B</b>	<a href="#">Review Question</a> p. 2	<a href="#">Detailed Explanation</a> p. 191
2. <b>D</b>	<a href="#">Review Question</a> p. 3	<a href="#">Detailed Explanation</a> p. 191
3. <b>C</b>	<a href="#">Review Question</a> p. 4	<a href="#">Detailed Explanation</a> p. 192
4. <b>A</b>	<a href="#">Review Question</a> p. 4	<a href="#">Detailed Explanation</a> p. 192
5. <b>D</b>	<a href="#">Review Question</a> p. 5	<a href="#">Detailed Explanation</a> p. 193
6. <b>D</b>	<a href="#">Review Question</a> p. 6	<a href="#">Detailed Explanation</a> p. 193
7. <b>B</b>	<a href="#">Review Question</a> p. 7	<a href="#">Detailed Explanation</a> p. 194
8. <b>A, D</b>	<a href="#">Review Question</a> p. 7	<a href="#">Detailed Explanation</a> p. 194
9. <b>C</b>	<a href="#">Review Question</a> p. 8	<a href="#">Detailed Explanation</a> p. 195
10. <b>B</b>	<a href="#">Review Question</a> p. 8	<a href="#">Detailed Explanation</a> p. 195
11. <b>D</b>	<a href="#">Review Question</a> p. 10	<a href="#">Detailed Explanation</a> p. 196
12. <b>A</b>	<a href="#">Review Question</a> p. 10	<a href="#">Detailed Explanation</a> p. 196
13. <b>D</b>	<a href="#">Review Question</a> p. 11	<a href="#">Detailed Explanation</a> p. 197
14. <b>D</b>	<a href="#">Review Question</a> p. 12	<a href="#">Detailed Explanation</a> p. 197
15. <b>B</b>	<a href="#">Review Question</a> p. 12	<a href="#">Detailed Explanation</a> p. 197
16. <b>C</b>	<a href="#">Review Question</a> p. 13	<a href="#">Detailed Explanation</a> p. 198
17. <b>C</b>	<a href="#">Review Question</a> p. 13	<a href="#">Detailed Explanation</a> p. 199
18. <b>C</b>	<a href="#">Review Question</a> p. 14	<a href="#">Detailed Explanation</a> p. 199
19. <b>C</b>	<a href="#">Review Question</a> p. 15	<a href="#">Detailed Explanation</a> p. 200
20. <b>B</b>	<a href="#">Review Question</a> p. 15	<a href="#">Detailed Explanation</a> p. 200
21. <b>D</b>	<a href="#">Review Question</a> p. 16	<a href="#">Detailed Explanation</a> p. 201
22. <b>C</b>	<a href="#">Review Question</a> p. 17	<a href="#">Detailed Explanation</a> p. 201
23. <b>D</b>	<a href="#">Review Question</a> p. 18	<a href="#">Detailed Explanation</a> p. 202

## Explanations: Chapter 1

1. [Review Question](#) p. 2

**Answers: B**

**Explanation A.** The configuration partition contains information about the structure of Active Directory in the forest, including domains, sites, and services. It is not possible to add application-specific data to this partition.

**Explanation B.** An application partition is a new feature of Windows Server 2003 that contains application-specific data that needs to be replicated only to specific domain controllers in one or more domains of the Active Directory forest. Tom can use the ntdsutil tool to create an application partition.

**Explanation C.** Active Directory Users and Computers does not contain any tools that would enable the creation of an application partition.

**Explanation D.** The configuration partition contains information about the structure of Active Directory in the forest, including domains, sites, and services. It is not possible to add application-specific data to this partition. Furthermore, you cannot use Active Directory Sites and Services in this manner.

PrepLogic Question: [1073-100](#)

2. [Review Question](#) p. 3

**Answers: D**

**Explanation A.** Because Brian needs to combine two or more site links to create a preferred route for Active Directory replication, he should create a site link bridge, not another site link. Exchange Server is used to e-mail replication data between sites; therefore, Brian needs to use the SMTP container and not the IP container to configure his site link bridge.

**Explanation B.** Because Brian needs to combine two or more site links to create a preferred route for Active Directory replication, he should create a site link bridge, not another site link.

**Explanation C.** Exchange Server is used to e-mail replication data between sites; therefore, Brian needs to use the SMTP container and not the IP container to configure his site link bridge.

**Explanation D.** A site link bridge contains two or more site links and is used to create a preferred route for Active Directory replication. Because Brian wants to use Exchange



Server to e-mail replication information between the sites involved, he needs to configure this site link bridge in the SMTP folder.

PrepLogic Question: [1073-105](#)

3. [Review Question](#) p. 4

**Answers: C**

**Explanation A.** Rhoda can place the domain controller near a global catalog server if she wants, but this is not as important a consideration as placing it where the largest number of users are found.

**Explanation B.** Rhoda should locate the RID master at the site at which the most user and group accounts are located because this server is involved in creating these objects. However, the RID master is not involved in the day-to-day authentication of users, so it is not necessary to place the PDC emulator and the RID master at the same site except for convenience of administration.

**Explanation C.** Rhoda should place the PDC emulator at the site that contains the largest number of users, because this is the site at which the largest number of password changes will take place. Most likely, this would also be the site containing the largest number of computers running older operating systems, such as Windows NT and Windows 98. The PDC emulator processes password changes and other account modifications for these users.

**Explanation D.** Rhoda should locate the RID master at the site at which the most user and group accounts are located because this server is involved in creating these objects. However, the RID master is not involved in the day-to-day authentication of users, so it is not necessary to place the PDC emulator and the RID master at the same site except for convenience of administration.

PrepLogic Question: [1073-109](#)

4. [Review Question](#) p. 4

**Answers: A**

**Explanation A.** In a small office such as this, it makes sense to configure the domain controller to use universal group caching. This feature caches universal group membership on the local domain controller, thereby reducing the amount of WAN traffic required during logon.

**Explanation B.** A small site that contains a single domain controller, only a small number of users and computers, and a slow link to other offices benefits more from universal group caching than from a global catalog. In this case, using a global catalog



server would likely place more traffic on the WAN link than would be placed by the amount of requests for data from other sites.

**Explanation C.** It is redundant to have both a global catalog and universal group caching on the same server.

**Explanation D.** This solution would be acceptable only if universal groups are unlikely to ever be needed, for example in a single domain enterprise.

PrepLogic Question: [1073-112](#)

5. [Review Question](#) p. 5

**Answers: D**

**Explanation A.** There is no need to employ universal groups in a single domain enterprise; consequently, this role is not needed on the branch office domain controller or on any other domain controller on the network.

**Explanation B.** A single domain enterprise does not rely on the global catalog server for locating resources.

**Explanation C.** It is redundant to have both a global catalog and universal group caching on the same server.

**Explanation D.** A single domain enterprise does not rely on the global catalog server for locating resources. In addition, it is not necessary to employ universal groups in a single domain enterprise. Therefore, neither of these roles is needed at the branch office.

PrepLogic Question: [1073-113](#)

6. [Review Question](#) p. 6

**Answers: D**

**Explanation A.** It is not necessary to delete and recreate any Active Directory information; the objects that are created in Active Directory are not based upon the physical location of the computers that they represent.

**Explanation B.** If Maria were to install Windows Server 2003 on a computer originally located in Istanbul and run dcpromo.exe there, the computer would need to contact the Rome domain controller to install Active Directory. If the unreliable WAN link went down during installation, Active Directory installation would fail.

**Explanation C.** Conceptually, this solution would work and would have been the best solution under Windows 2000. However, it takes far more effort than that of shipping

