

# Practice Exam Integration and Lecture Series Resource Center

To help you learn more quickly and easily, your Lecture Series audio training provides Practice Exam/Audio Integration and the exclusive Lecture Series Resource Center. Follow the instructions below to access your Lecture Series Resource Center and to integrate your Lecture Series audio training with your PrepLogic Practice Exam. If you need help with your Practice Exam/Audio Integration (or anything else) please contact PrepLogic through our online ticket system at [www.preplogic.com/support](http://www.preplogic.com/support).

## Step 1 CD-Rom Users

Place Resource CD into your CD-ROM tray and proceed to Step 2

Or

### Digital Download Users

- Click the link below to download the required integration files.  
[www.preplogic.com/products/audio/download/integration/](http://www.preplogic.com/products/audio/download/integration/)
- Unzip your Resource Center Practice Exam Integration files.
- Access your Resource Center:

#### ▶ Internet Explorer Users:

Open the file titled start.html and proceed to Step 3

#### ▶ Firefox Users:

To access your reference images, open the file titled start.html and proceed to Step 3

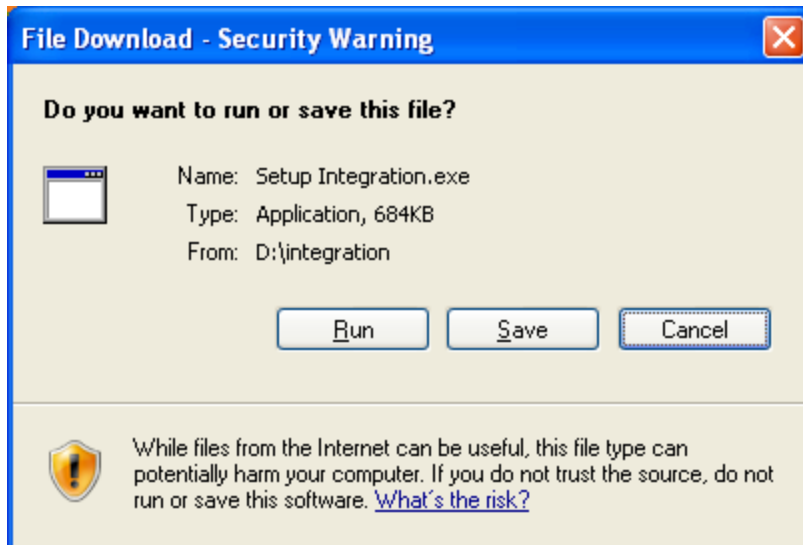
To integrate your Lecture Series with your practice exam, open the folder labeled "Integration" then open the file labeled setup integration and proceed to Step 4

Step 2 Windows may ask if you want to "Run Active X Controls." Click Yes or Run.

Step 3 The welcome box will be the first window that will appear. This page gives you the option to view resource figures, integrate your audio with practice exams or learn about enhanced learning by PrepLogic. Click the middle box titled Setup Integration.

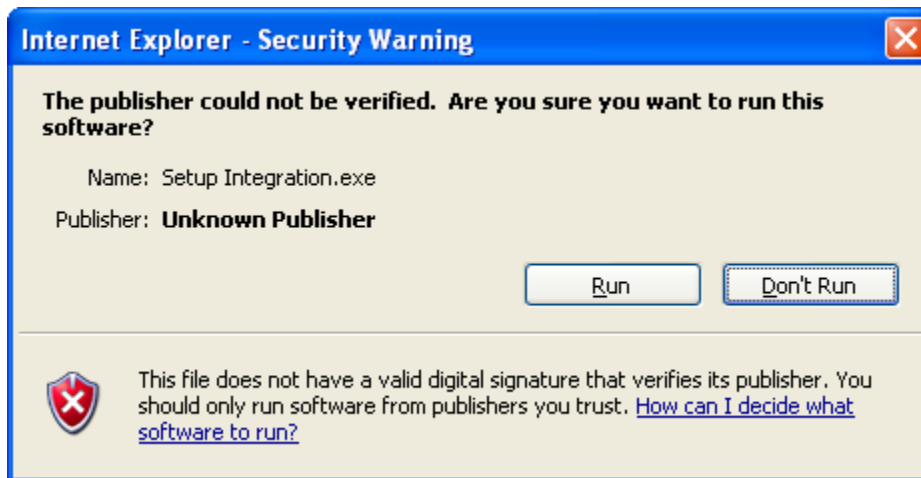


Step 4 Windows will ask if you want to run or save the file. Click **Run**.



Windows may open an additional Security Warning box. Click **Run**.

Step 5



- Step 6 After the file has downloaded, a PrepLogic window will open and ask if you want to integrate now or later. Click **Yes, Integrate Now!**

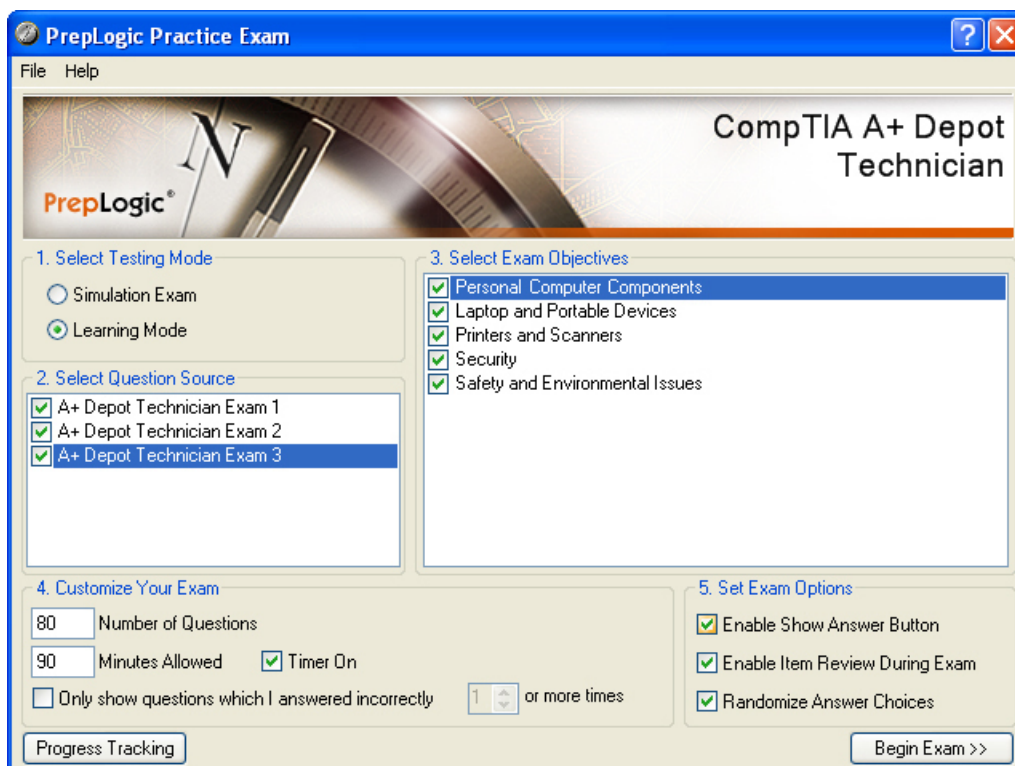
**Note:** The space needed to integrate varies and may exceed 150MB in some titles. Before choosing to integrate now, you'll want to confirm that you have the available disk space of the hard drive that your PrepLogic Practice Exams are installed on. If you have less than the needed space, some audio files may not be integrated.



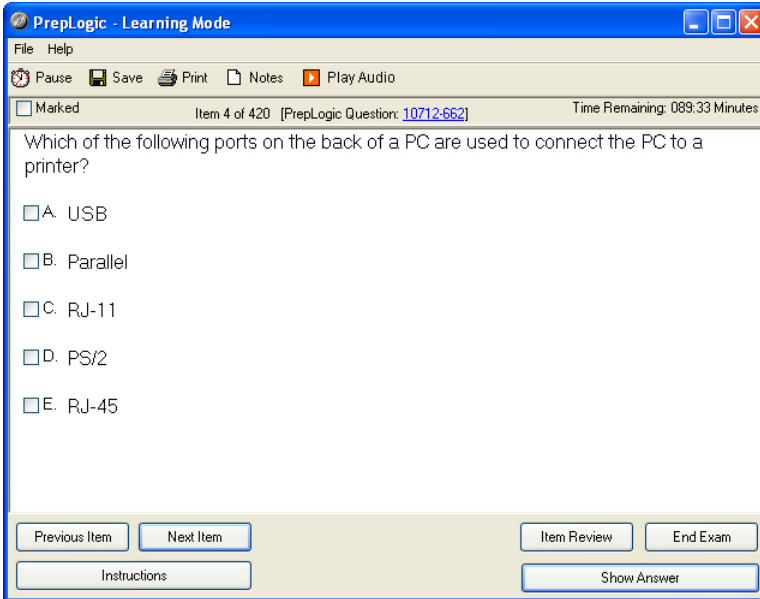
- Step 7 Once the integration is complete, a PrepLogic window will open with the message "Integration is Complete!" You may now close this window.



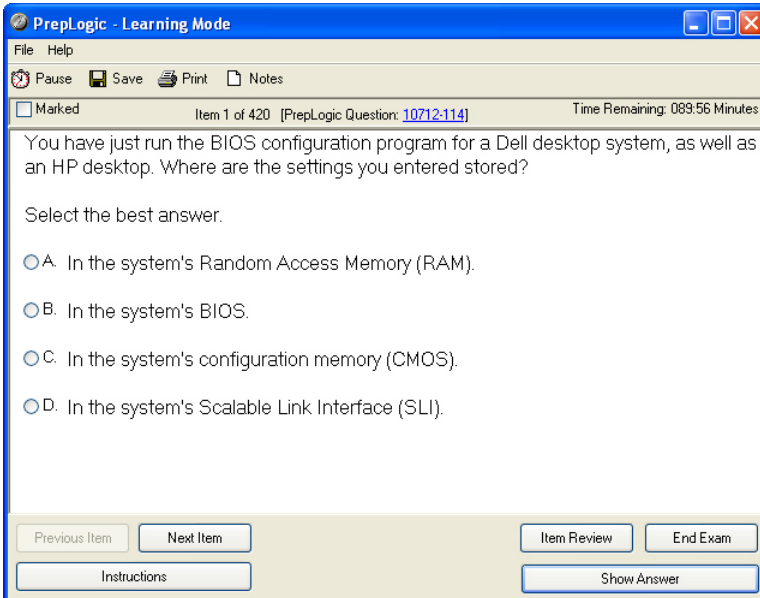
- Step **8** Now that your integration is complete, open your Practice Exam and click **Begin Exam** at the bottom right hand side of the screen.



Step 9 Now that you are in the exam, take a look at the top portion of the screen for the **Play Audio** button. By clicking the arrow, you can listen to the related audio for that question.



**Note:** Not every question will have audio. On questions without audio, there will not be a **Play Audio** button.



- Step 10 If your exam still has an **Add Audio Explanation** link where the **Play Audio** link should be, it means that your software did not successfully integrate. Repeat the above steps or contact customer service for further assistance.

